

# SOLIDCORE



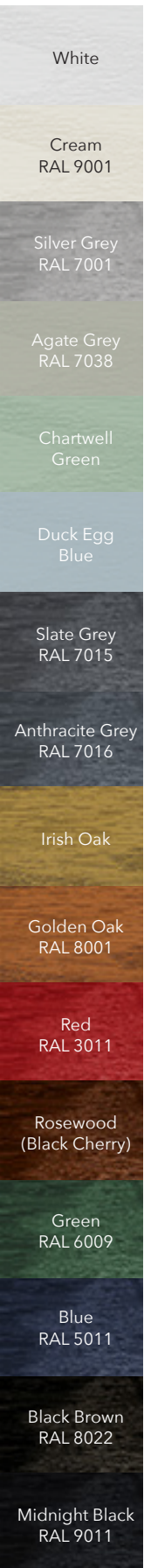
## Fire Door Collection



**FUTURE PRODUCTS LTD**  
OUR PRODUCTS ARE YOUR FUTURE



# The FD30s Door collection



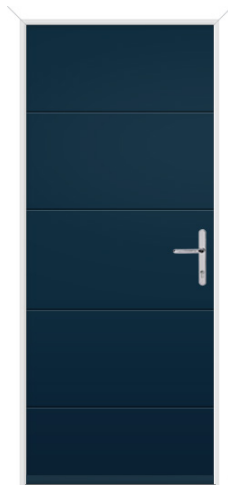
Abbey Solid  
Green RAL 6009



Carburton  
Irish Oak



Carsington Solid



Cromsford Solid  
Blue  
RAL 5011



Newstead Solid  
Midnight Black  
RAL 9011



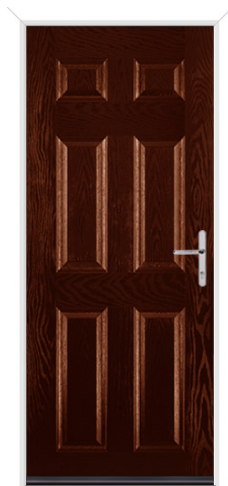
Normanton  
Chartwell Green



Normanton 2 Hinge  
Agate Grey  
RAL 7038



Normanton 2 Handle  
Irish Oak



Rufford  
Rosewood  
(Black Cherry)



Newstead 1  
Golden Oak  
RAL 8001



Maple Solid  
Red  
RAL 3011



Wellow 2  
White



Wellow 3 Centre  
Anthracite Grey  
RAL 7016



Wellow 4  
Cream  
RAL 9001

Wellow cassettes are available central or to the left or right - please specify



## GU Security Automatic - FD30S Fire Door Lock

This is a Slam Shut Lock. The spindle is situated at 960 from the bottom of the slab. Lock comes with fully adjustable composite keeps with edge protection. With 3 deadbolts and centre latch this is a PAS23/24 tested lock. This is our only lock used on FD30S doors in conjunction with our fire testing certificate.

## Astra 4000 Door Closer - Our Standard

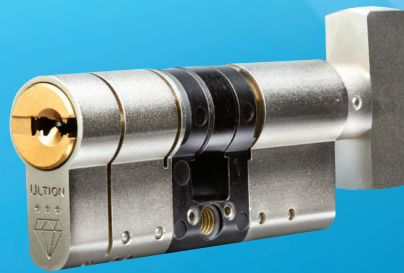
Fully controlled door closer. Easy speed adjustment makes this ultra efficient.



Optional Dorma External fitted closer. Scissor Arm closer with link arm.



## Ultion Cylinder - FD30S Cylinder



### Ultion Thumbturn

3 Star Security Cylinder with Secured By Design accreditation and Sold Secure Diamond Standard.



## Nu Mail Fire Letterplate

Fitted with a Shield/Cowl for PAS24

Available in: white, black, bright gold, bright chrome, satin chrome, 7016 grey, graphite & stainless steel

Letterplates can only fitted between 750mm - 850mm from the bottom of the door slab and must be at least 150mm from a glazed area.



## Union Powerload Butt Hinge



High Performance brushed bearing butt hinge. Radius corners for speed of fixing.

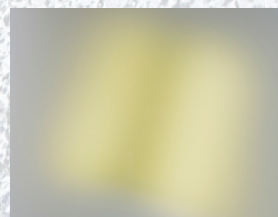
## Glass Options



7mm Pyrodur with 6.8mm Clear



7mm Pyrodur with 6.8mm Stippolyte



7mm Pyrodur with 6.8mm Satin





FD30S Fire Doors



Certified Registered CF5705



EN14449:2005-EN1279-5  
Compliant Sealed Units



BSEN 1154 Compliant Closers



Tested to BS476 Part 22 1987 Both Sides  
Report numbers 402105 & 403720

Using Overhead Closer					
Solid Core FD30S Door Style	Min Width	Max Width	Min Height	Max Height	Can Letterbox be fitted?
Carburton Solid	670	1014	1931	2126	Yes
Maple Solid	854	1014	1984	2126	Yes
Normanton	670	1014	1931	2126	Yes
Normanton 2	670	1014	2119	2126	No
Rufford Solid	854	1014	1931	2126	Yes
Wellow 2	670	1014	1931	2126	Yes
Wellow 3	670	1014	1931	2126	No
Wellow 4	670	1014	1984	2126	No
Abbey Solid	754	1004	1984	2126	Yes
Carsington Solid	814	1004	1984	2126	Yes
Cromford Solid	670	1004	1984	2126	Yes
Newstead Solid	874	1004	1984	2126	Yes
Newstead 1	874	1004	1984	2126	Yes

Using Concealed Closer						
Solid Core FD30S Door Style	Min Width	Max Width	Min Height	Max Height	Can Letterbox be fitted?	Min Width with Letterbox
Carburton Solid	670	1014	1931	2126	Yes	864
Maple Solid	854	1014	1984	2126	Yes	864
Normanton	670	1014	1931	2126	Yes	864
Normanton 2	670	1014	2119	2126	No	N/A
Rufford Solid	854	1014	1984	2126	Yes	864
Wellow 2	670	1014	1931	2126	Yes	864
Wellow 3	670	1014	1931	2126	No	N/A
Wellow 4	670	1014	1984	2126	No	N/A
Abbey Solid	754	1004	1984	2126	Yes	864
Carsington Solid	814	1004	1984	2126	Yes	864
Cromford Solid	670	1004	1984	2126	Yes	864
Newstead Solid	874	1004	1984	2126	Yes	874
Newstead 1	874	1004	1984	2126	Yes	874

**SOLIDCORE**



certifire

CERTIFICATE OF APPROVAL  
No CF 5705



FIRE DOOR NOTIFICATION - PLEASE BE AWARE: Due to recent changes (Nov 1 2019) in European Law relating to the supply of Fire Doors, the SolidCore certified FD30s should only be used as an internal door set with resistance to fire and smoke and should not be specified or installed as an external door set.

For reference, the definition of an external door set as defined in BS EN 14351-1:2006 is a 'doorset, which separates the internal climate from the external climate of a construction for which the main intended use is the passage of pedestrians'.

"All the information in this brochure is provided for guidance only and is given in good faith, but without warranty or guarantee of any kind, whether implied or expressed. Our policy is to continually improve products, therefore methods, material and changes of specification may be made from time to time without prior notice"

[www.solidcoredoors.co.uk](http://www.solidcoredoors.co.uk)

Version 2 Oct 24